

ALANTE

COMFORT MEETS DEPENDABILITY



2+3
YEAR | YEAR
WARRANTY

INTERIOR DESIGN



BRIDGEPORT



Wood



Floor



Countertop

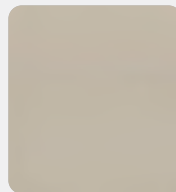


Main Fabric

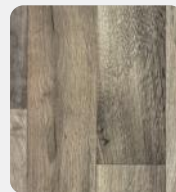


Furniture

MODERN FARMHOUSE



Wood



Floor



Countertop



Main Fabric



Furniture

26X OPTIONS: C



27A OPTIONS: A



29F OPTIONS: A



29S OPTIONS: A, B




31V OPTIONS: A, B




OPTIONS

A




12 Cu. Ft. Fridge

B



Theater Sofa with Cup Holders

C



Theater Sofa

EXTERIOR



Standard Graphics Package

STANDARDS & OPTIONS

CUSTOMER VALUE PACKAGE

JRIDE®: Computer-balanced driveshaft, jounce bumpers, heavy-duty front and rear stabilizer bars, SACHS shocks
 One-piece, crowned fiberglass roof
 Exterior entertainment center with outside speakers, LED TV mounted on swivel bracket and single-disc DVD/FM radio
 Electric patio awning with LED lights
 Slideout cover awnings
 1,000-watt inverter
 Sony® infotainment center with Apple® CarPlay™ and Android Auto™
 Backup and side-view cameras
 Removable driver/passenger cockpit table
 LED HD Smart Fire TV in living area
 Blackout night roller shades

DRIVING

Ford® F53 chassis
 GVWR- 16,000 lb. (26X), 18,000 lb. (27A, 29F, 29S, 31V)
 GCWR- 23,000 lb.
 7.3L V-8 350 HP engine with 468 ft.-lb. torque
 6-speed automatic TorqShift® transmission with overdrive and tow haul mode
 210-amp alternator
 G-rated highway tires-245/70R19.5
 Front and rear disc, 4-wheel anti-lock brakes
 5,000 lb. rear hitch receiver with dual connector and 7-pin plug
 12V chassis battery
 80 gal. fuel tank
 120 in. panoramic windshield - largest in the industry
 Swivel driver and passenger seats
 Soft-touch, vinyl-wrapped automotive dash
 Tilt steering wheel
 A/C and cruise control

EXTERIOR

StrongholdVBL™ roof, floor and sidewalls
 Bead-foam insulation (R-24 max roof, R-9 max floor, R-5 max walls)
 One-piece, seamless, fiberglass front cap
 Fiberglass exterior walls with vinyl graphics
 Automatic hydraulic leveling jacks
 Frameless windows
 Entrance door with industry's largest travel-view window
 Electric-powered entrance step
 Lockable, pass-through storage compartments with metal slam latches
 Heated holding tanks (12V pads)
 16.5 gal. propane tank (56 lb.)
 LP quick-connect hookup
 Exterior utility center
 Winterization drain system
 Outside shower
 12V demand water pump
 Onan® Marquis Gold Genset 4,000-watt gas generator
 Transfer switch with reverse polarity protection

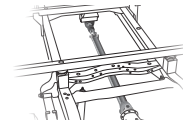
30-amp electrical service
 (2) 12V house batteries
 190W solar panel with dual controller and second house battery
 Flush-mount LED marker lights
 Third brake light
 Porch light
 4 in. tube bumper with sewer hose storage

INTERIOR

Power front privacy shade with manual side privacy shades
 84 in. interior ceiling height
 High-intensity, recessed LED ceiling lights
 LED-lit, hardwood fascia
 Hardwood cabinet doors and drawers
 Ball-bearing drawer guides
 Jayco-exclusive, easy-operation legless dinette table
 2-point lap safety belts in all designated seating locations
 Dual A/C units with power management system [(1)15,000 on 26X]
 30,000 BTU auto-ignition ducted furnace
 Girard® tankless LP water heater
 Prep for satellite dish
 Cable TV hookup with RG-6 coax and video selector switch
 Winegard 2.0 Wi-Fi/4G antenna
 8 cu. ft., flush-mount, double-door refrigerator
 Furrion® all-in-one cooktop and oven
 Residential-size microwave
 Large stainless steel kitchen sink with cover
 LED-lit, pressed countertops
 Flip-up countertop extension (select models)
 Decorative kitchen backsplash
 Pop-up charging station in kitchen with 110 outlets and USB ports
 Water filtration system
 Shower with decorative surround, glass door, skylight and light
 Stainless steel bathroom sink
 Porcelain toilet with foot flush
 Powered roof vent in bathroom with wall switch
 Walk-around queen-size bed with bedspread and nightstands (king-size in 27A)
 Under-bed storage (select models)
 Powered roof vent in bedroom with wall switch (26X)
 Large wardrobes
 Bunks with industry-exclusive 300 lb. capacity each (29F)
 Smoke alarm
 Carbon monoxide detector

OPTIONS

Drop-down overhead bunk in cab area with 750 lb. capacity
 Theater seating (N/A 27A, 29F)
 12 cu. ft. gas/electric refrigerator (N/A 26X)
 Bedroom TV



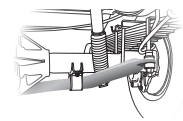
COMPUTER-BALANCED DRIVESHAFT

Ensures smooth and efficient power transfer to the wheels



JOUNCE BUMPERS

Assist during extreme road occurrences to absorb impact and dampen excess road noise



HEAVY-DUTY FRONT & REAR STABILIZER BAR

A large bar and polyurethane bushings, instead of rubber, transfer power faster for extra support, more stability and easier handling



SACHS SHOCK ABSORBERS

Large-diameter tube design pairs gas and hydraulics to resist heat and pressure while independently adjusting to changing road conditions

FLOORPLAN	GVWR (lbs.)	GCWR (lbs.)	WHEEL BASE	OVERALL LENGTH	EXTERIOR HEIGHT WITH SATELLITE AND A/C	EXTERIOR WIDTH	INTERIOR HEIGHT	FRESH WATER CAPACITY (gal.)	GRAY WASTE WATER CAPACITY (gal.)	BLACK WASTE WATER CAPACITY (gal.)
26X	16,000	23,000	178"	28' 5"	12' 5"	101"	84"	53	40	32
27A	18,000	23,000	190"	29' 11"	12' 5"	101"	84"	72	50	49
29F	18,000	23,000	190"	32' 2"	12' 5"	101"	84"	72	40	49
29S	18,000	23,000	190"	31' 4"	12' 5"	101"	84"	72	40/9	50
31V	18,000	23,000	190"	32' 2"	12' 5"	101"	84"	72	40	50

Meet your Jayco Dealer

LaMESA REC VAN
 LaMesaRV.com
 800-496-8778



Scan QR code for specification definitions



Some specs at the time of print may include estimates. For the most updated information, please visit Jayco.com/alante

Jayco, Inc. | P.O. Box 460 | Middlebury, IN 46540

See dealer for further information and prices. All information in this brochure and on www.jayco.com is the latest available at the time of publication approval. Jayco reserves the right to make changes and to discontinue models without notice or obligation. Photography may show optional equipment or props used for decoration purposes only. RVs built for sale in Canada may differ to conform to Canadian codes. JAYCO and the JAYCO BIRD IN FLIGHT are registered trademarks of Jayco, Inc. Printed in USA 9/21 ©2021 Jayco, Inc. 257070

Jayco - Part of the Jayco Family of Companies